

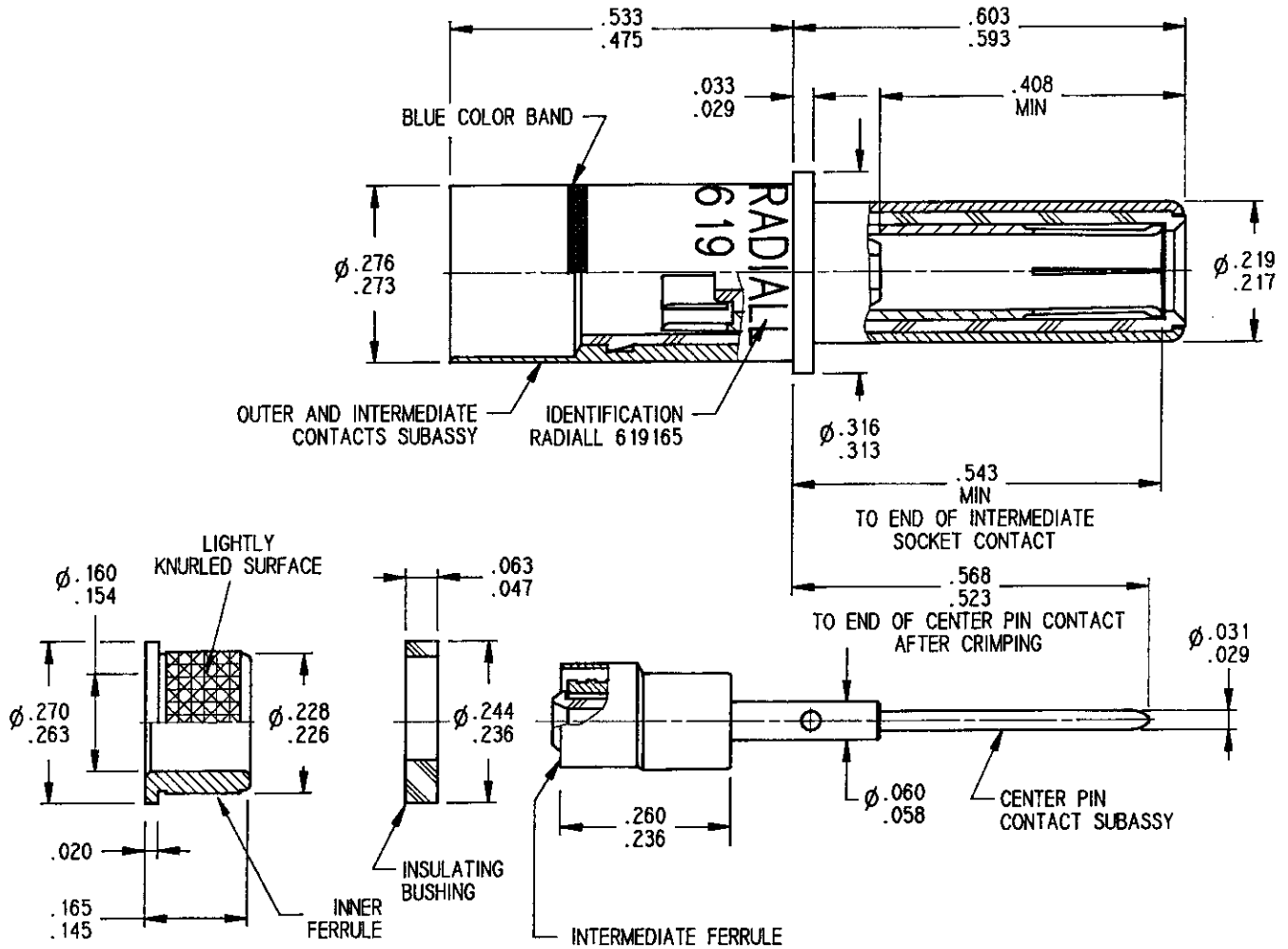


Séries
BPX

SIZE 8 CONCENTRIC TWINAX PIN CONTACT REAR RELEASE, REAR REMOVABLE
CABLE P/N: S280W502_1
BOEING P/N: S280W552_203

Issue:
29 APRIL 94

Page
1 / 1



MATERIALS:

OUTER, CENTER CONTACTS, FERRULE AND INNER FERRULE: BRASS PER QQ_B_626
INTERMEDIATE CONTACT: BERYLLIUM COPPER ALLOY PER QQ_C_530 HEAT TREATED FOR SPRING TINES
OUTER DIELECTRIC: ULTEM
CENTER DIELECTRIC AND INSULATING BUSHING: TPFE

FINISHES (ALL METAL PARTS)

GOLD PLATE PER MIL_G_45204, TYPE II, GRADE C, CLASS 1 50 MICROINCHES OVER NICKEL PLATE PER QQ_N_290, CLASS 2

SEE WIRING INSTRUCTIONS: RP08820

This information is given as an indication. In the continual goal to improve our products, we reserve the right to make any modifications judged necessary.

4112_9311

CREATION				
PEN: .				
NOM: JP MACARI				
DATE: 29 APRIL 94				
APPR: <i>CAR...</i>				
	Issue	Revisions	Name	Approved

XXXXXXXX